

Function

- ▶ Thickness measurement of non-magnetic coating on the surface of magnetic metal substrate.
- ▶ Thickness measurement of the non-metallic coating on the surface of the non-magnetic metal substrate.
- ▶ Automatic identification function of magnetic metal substrate and non-magnetic metal substrate.
- ▶ Three measurement methods: single continuous, and difference.
- ▶ With zero point, offset, and basic three calibration functions.
- ▶ Metric and Imperial unit selection.
- ▶ LCD backlight function.
- ▶ Automatic shutdown function

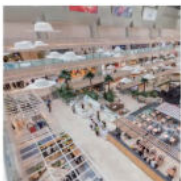
Application



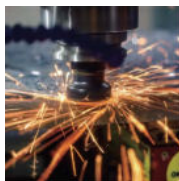
Petrochemical industry



Manufacturing



Commodity inspection



Ironmaking industry



Spray paint

Specification

Measurement range	0 ~ 1800µm/70.8mil/1.8mm
Resolution	(0.1µm(<100µm), 1µm(≥100µm))/0.1mil/0.001mm
Measurement error	≤150µm ±5µm >150µm ±(3%H+1µm)
Minimum diameter of magnetic metal substrate	12mm
Minimum thickness of magnetic metal substrate	0.5mm
Minimum radius of curvature for magnetic convex substrate	2mm
Minimum radius of curvature for magnetic concave substrate	11mm
Minimum diameter of non-magnetic metal substrate	50mm
Minimum thickness of non-magnetic metal substrate	0.5mm
Operating temperature	-20~+40°C
Operating humidity	10 95%RH
Size	62*27*121.5mm
Weight	105.03g
battery	1.5V AAA alkaline battery*2



Aluminum base



Iron base



Calibration sheet